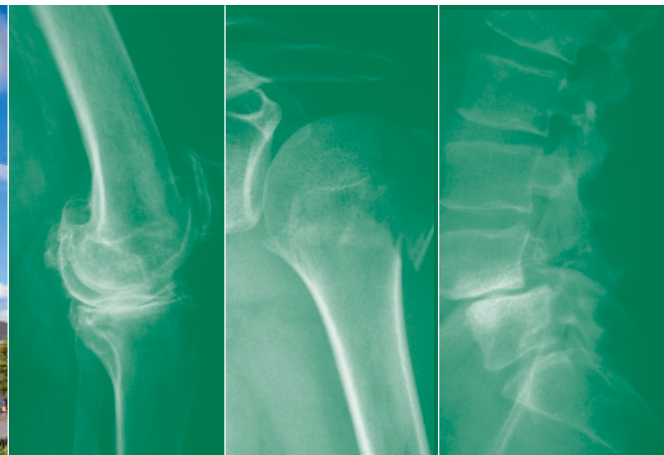


13th EFORT Congress 2012

Abstract submission deadline
15 September 2011

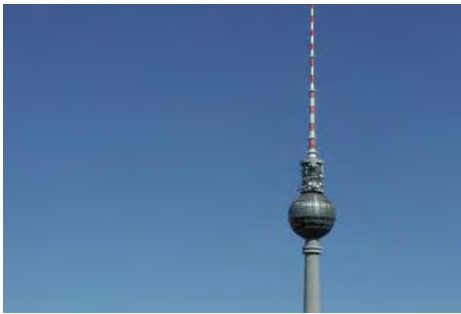
Early registration deadline
30 January 2012



First announcement & call for abstracts

Berlin, Germany
23 – 25 May 2012

Contents



GENERAL ORGANISATION

EFORT Head Office
Technoparkstrasse 1
8005 Zurich, Switzerland
Phone +41 (44) 448 4400
Fax +41 (44) 448 4411
E-mail event@efort.org
www.efort.org

CONGRESS ORGANISERS

MCI Schweiz AG
MCI-Zurich Office
Flughofstrasse 54
8152 Zurich-Glattbrugg, Switzerland
Phone +41 (44) 809 4241
Fax +41 (44) 809 4240
E-mail EFORTinfo@mci-group.com

INVITATION TO PARTICIPANTS

Welcome from EFORT 4
Societies 5

FORTHCOMING 13TH EFORT CONGRESS BERLIN

Call for abstracts 6
The Congress at a glance 7
Preliminary scientific programme 8
Preliminary social programme 9
Registration and fees 10
Payment and cancellations 11
General information 12 - 13

ABOUT BERLIN

About the host city 14
Hotel information 15
Travel information 16 - 18

Welcome from EFORT



Prof. Dr. Miklós Szendrői



Prof. Dr. Karsten Dreinhöfer



Prof. Dr. Dieter Christian Wirtz

Dear Participants,

On behalf of the Executive Committee and the Local Organising Committee, we are delighted to invite you to participate in the 13th EFORT Congress in Berlin in 2012.

Following the success of the previous meetings, the scientific programme will be focused mainly on symposia and instructional lectures given by distinguished speakers, as well as free paper submissions from all over Europe. Highlights of the Congress include the aging spine, navigation and soft tissue balancing in total knee arthroplasty, orthopaedic responsibility in pain treatment, arthroscopy in hand surgery, treatment options in difficult cases, and an evaluation in stem cell therapy, to mention only a few.

In view of the UN Decade of Action for Road Safety (2011–2020), we will focus in particular trauma topics, such as patients with multiple injuries. In collaboration with our Speciality Societies, we are organising special sessions such as Experts meet Experts (ExME_x), and the Controversial Case Discussions (CCD), which have been highly rated in the past – as has the one-day Comprehensive Review Course (CRC) aimed at younger colleagues and residents. Cross fire sessions will guarantee interesting discussions, while the Mike Freeman and Erwin Morscher Honorary Lectures will offer the views of two of our most experienced surgeons. Industry symposia, workshops and technical exhibits will also be a major part in our Congress.

The scientific programme would, however, be incomplete without your participation, without free paper lectures and e-posters. We encourage all of you to submit abstracts of your work, so that we can put together an exceptional scientific programme. The Local Organising Committee and the EFORT Scientific Committee are certain to make this EFORT Congress a most valuable educational event.

We look forward to meeting you in the vibrant city of Berlin for the 13th EFORT Congress in 2012.

Prof. Dr. Miklós Szendrői
EFORT President 2010/2011

Prof. Dr. Karsten Dreinhöfer
Chairman LOC 2012

Prof. Dr. Dieter Christian Wirtz
Chairman LOC 2012

NATIONAL MEMBER SOCIETIES

Albania	AAOST	Albanian Association of Orthopaedic Surgery and Traumatology
Austria	ÖGO	Austrian Society of Orthopaedics and Orthopaedic Surgery
Belgium	BVOT	Belgian Association of Orthopaedics and Traumatology
Belgium	SORBCOT	Belgian Royal Society of Orthopaedic Surgery and Traumatology
Bosnia and Herzegovina	OTSABH	Orthopaedic and Traumatology Surgeons Association of Bosnia and Herzegovina
Bulgaria	BOTA	Bulgarian Orthopaedics and Trauma Association
Croatia	COTA/HUOT	Croatian Orthopaedic and Traumatology Association
Croatia	CrOS	Croatian Orthopaedic Society of the Croatian Medical Association
Cyprus	CAOST	Cyprus Association of Orthopaedic Surgery and Traumatology
Czech Republic	CSOT	Czech Society for Orthopaedics and Traumatology
Denmark	DOS	Danish Orthopaedic Society
Estonia	ETOS	Estonian Orthopaedic Society
Finland	SOY-FOA	Finnish Orthopaedic Association
Former Yugoslav Republic of Macedonia (FYROM)	MAOT	Macedonian Association of Orthopaedics and Traumatology
France	SOFcot	French Society of Orthopaedic Surgery and Traumatology
Germany	BVOU	Professional Association of Orthopaedic Surgeons
Germany	DGOOC	German Association of Orthopaedics and Orthopaedic Surgery
Greece	HAOST	Hellenic Association of Orthopaedic Surgery and Traumatology
Hungary	MOT/HOA	Hungarian Orthopaedic Association
Iceland	IBF	Icelandic Orthopaedic Society
Ireland	IOA	Irish Orthopaedic Association
Italy	SIOT	Italian Society of Orthopaedics and Traumatology
Kosovo	KSOTS	Kosovo Society of Orthopaedics and Trauma Surgeons
Latvia	LTOA	Latvian Association of Traumatology and Orthopaedics
Lithuania	LSOT/LOTD	Lithuanian Society of Orthopaedics and Traumatology
Luxembourg	SLOT	Luxembourgian Society of Orthopaedics and Traumatology
Malta	AOTSM	Association of Orthopaedic and Trauma Surgeons of Malta
Netherlands	NOV	Dutch Orthopaedic Association
Norway	NOF	Norwegian Orthopaedic Association
Poland	PTOITR	Polish Orthopaedic and Traumatologic Society
Portugal	SPOT	Portuguese Society of Orthopaedics and Traumatology
Romania	SOROT	Romanian Society of Orthopaedics and Traumatology
Russian Federation	AOTRF	Association of Orthopaedists and Traumatologists of the Russian Federation
Serbia	SOTA	Serbian Orthopaedic Trauma Association
Slovakia	SOTS	Slovak Orthopaedic and Traumatologic Society
Slovenia	SOA/ZOSZD	Slovenian Orthopaedic Association
Spain	SECOT	Spanish Orthopaedic and Traumatology Society
Sweden	SOF	Swedish Orthopaedic Association
Switzerland	SGO-SSO	Swiss Society of Orthopaedic Surgery and Traumatology
Turkey	TSOT/TOTBID	Turkish Society of Orthopaedics and Traumatology
Ukraine	UAOST	Ukrainian Association of Orthopaedic Surgeons and Traumatologists
United Kingdom	BOA	British Orthopaedic Association

SPECIALTY SOCIETIES AND AFFILIATED ORGANISATIONS COLLABORATING IN BERLIN

ARTOF	Association for the Rational Treatment of Fractures
EBJIS	European Bone and Joint Infection Society
EFAS	European Foot and Ankle Society
EFOST	European Federation of National Associations of Orthopaedic Sports Traumatology
EHS	European Hip Society
EORS	European Orthopaedic Research Society
EPOS	European Paediatric Orthopaedic Society
ERASS	European Rheumatism and Arthritis Surgical Society
ESB	European Society for Biomaterials
ESPA	European Society Plevis Acetabulum
ESSKA	European Society of Sports Traumatology, Knee Surgery and Arthroscopy
ESTES	European Society for Trauma and Emergency Surgery
EuroSpine	EuroSpine - the Spine Society of Europe
EWAS	European Wrist Arthroscopy Society
EWMA	European Wound Management Association
FESSH	Federation of European Societies for Surgery of the Hand
ISLASS	International Society of Laser and Percutaneous Procedures in Spinal Surgery
ISTF	International Surgical Thrombosis Forum

Call for abstracts



Direct access at: www.efort.org/berlin2012/abstract

Deadline: 15 September 2011

ABSTRACT SUBMISSION

The abstract submission system is accessible through the EFORT portal at www.efort.org/berlin2012 from August 2011.

CATEGORIES OF ABSTRACT SUBMISSION

EFORT offers the following 18 categories:

A	General Orthopaedics
A1	Bone and joint tumours
A2	General Orthopaedics / complications / basic science / technology
A3	Infection
A4	Osteoporosis
A5	Pain control / rehabilitation and non-surgical management
A6	Sports / knee soft-tissue
A7	Tribology
B	Upper limb
B1	Hand and wrist
B2	Shoulder / elbow, arm / forearm
C	Spine
C1	Spine (incl. trauma)
D	Lower limb
D1	Foot / ankle / leg
D2	Hip
D3	Knee osseous
E	Trauma
E1	Trauma upper limb
E2	Trauma lower limb
E3	Polytrauma / pelvis
F	Paediatrics
F1	Paediatrics
G	Nurse
G1	Nurse

EFORT does not accept resubmissions. Only abstracts submitted electronically can be accepted.

ONLINE SUBMISSION PROCEDURE

After logging on to the EFORT portal, be sure to follow the onscreen instructions precisely as they lead you through the submission process. **There is no restriction on the number of abstracts you may submit, however per registered participant a total of 2 oral presentations and 5 e-posters are accepted only.** Some information is mandatory, however, and you will not be able to proceed further if you do not complete the fields. Please also note that you may modify your abstract(s) until the submission deadline date. Consider your submission category carefully. If there is a discrepancy between your topic and its category, EFORT reserves the right to change the category or reject your abstract.

For more details, please visit: www.efort.org/berlin2012/abstract

INFORMATION ON ABSTRACT ACCEPTANCE

You will be notified by e-mail about the acceptance of your abstract(s) by 2 January 2012 at the latest. The presenting author of a selected abstract must undertake to attend the Congress and present the abstract in the session and at the time designated by the Scientific Committee. **EFORT therefore requires all authors to register by 30 January 2012 at the latest.** Only registrations to the full congress are accepted (no day registrations).

TECHNICAL SUPPORT

Technical support will be provided for authors of abstracts, as detailed in the frequently asked questions and help document.

Please send all requests concerning electronic submissions for the 13th EFORT Congress by e-mail to: abstracts@efort.org.

ORAL PRESENTATIONS (Free Paper Sessions)

Computer projection only will be available for presentations in the meeting rooms. To ensure that sessions run smoothly, please refer to the Presentation Guidelines available online on the abstract page.

The best-rated free papers may be put forward for the EFORT Free Paper Award. From the presentations that are received, the three best will be selected for the award. The authors of the selected papers will be informed prior to the Congress, and certificates will be presented during the official opening ceremony.

E-POSTER PRESENTATIONS

The poster presentations will be in electronic format. A large display area with e-posters will be dedicated to poster presentations.

Out of the best-rated e-poster abstracts submitted for the Congress, the ten best will be awarded the Jacques Duparc Award. Authors will be informed prior to the Congress, and certificates will be presented during the official opening ceremony.

The Congress at a glance

Important dates to remember



CONGRESS DEADLINES

Abstract submission	15 September 2011
Confirmation of abstract acceptance	02 January 2012
Early registration	30 January 2012
Preliminary programme available	01 March 2012
Pre-registration	04 May 2012

PRELIMINARY CONGRESS SCHEDULE

22 May Tuesday	23 May Wednesday	24 May Thursday	25 May Friday
	Morning sessions	Morning sessions	Morning sessions
	12.30 - 14.00 Industry symposia	12.30 - 14.00 Industry symposia	12.30 - 14.00 Industry symposia
14.00-19.00 Registration	Afternoon sessions	Afternoon sessions	Afternoon sessions
	18.30 - 20.00 Opening Ceremony & Welcome Reception ICC Berlin	20.00 – 23.00 Berlin Night	
	Exhibition 08.30 - 17.30 ExMEEx sessions (2)	Exhibition 08.00 - 17.30 ExMEEx session (1)	Exhibition 08.00 - 17.30 CRC ExMEEx session (1)

EXHIBITION SCHEDULE

Wednesday, 23 May 2012	08.30 – 17.30
Thursday, 24 May 2012	08.00 – 17.30
Friday, 25 May 2012	08.00 – 17.30

Preliminary scientific programme

The scientific programme will consist of:

- A full-day comprehensive review course (CRC)
- Cross-fires
- Difficult case presentation
- E-poster presentations
- "Experts meet Experts" (ExMEx) sessions
- Honorary lectures
- Free paper sessions
- Industry symposia
- Instructional lectures
- Interactive controversial case discussions
- Symposia

HIGHLIGHTS

- **Bone & joint tumours:** Metastasis
- **Trauma:** Multiple fracture patients / intraoperative imaging
- **Pain:** Orthopaedic responsibility in pain treatment
- **Sports / knee soft-tissue:** Navigation and soft tissue balancing in TKA
- **Shoulder:** Complex shoulder problems
- **Infection:** Treatment options in difficult cases
- **Hand / wrist:** Arthroscopy in hand surgery
- **Spine:** The ageing spine
- **Foot / ankle:** Flatfoot, from childhood to the adult
- **Hip:** Peri-prosthetic fractures and revision arthroplasty
- **Osteoporosis:** New solutions for an old problem
- **Paediatrics:** Early care for the hip in children
- **Basic science:** Evaluation in stem cells therapy
- **Knee osseous:** Indications, techniques and rehabilitation



THE COMPREHENSIVE ORTHOPAEDIC REVIEW COURSE (CRC) – 25 May 2012

Primary target attendees: Young orthopaedic surgeons, residents in training

Pre-registration is mandatory

Max. capacity: 150 participants

Fee: EUR 115.00 ¹⁾

This course aims to teach the knowledge that is needed for every specialist, and to broaden the participant's orthopaedic horizons. This course provides up-to-date presentations in five major areas:

- Lower extremity
- Upper extremity
- Spine
- Paediatrics
- Basic science

Attending this comprehensive full-day review course will provide the necessary knowledge base to prepare for the European Board examination (EBOT). Registration for this course is separate from the overall Congress registration. More information at: www.efort.org/berlin2012/CRC

EXPERTS MEET EXPERTS SESSIONS (ExMEx)

Primary target attendees: Confirmed specialists and senior consultants

Pre-registration is mandatory

Max. capacity: 100 participants per session

Fee: EUR 51.00 ¹⁾ (please note that ExMEx sessions may be attended only if the participant is registered for the Congress)

This format is a comprehensive review of specific surgical techniques, and may include a technical workshop. A critical review of the individual presentations will take place.

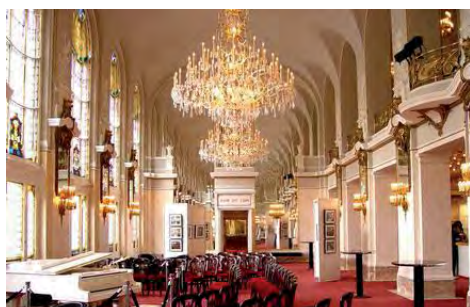
There will be ample opportunity for each attendee to speak directly with the presenters. Active involvement on the part of attendees will maximise the benefits of this unique encounter between faculty members and experienced participants. The programme for each session is produced in cooperation with the appropriate European Speciality Society.

The following sessions are planned:

- Acetabular fractures
- Revision in cruciate ligament reconstruction
- Periprosthetic fractures around the hip and knee
- Osteoporosis and operative treatment of fragility fractures

¹⁾ Fee applies for pre-registration.

Preliminary social programme



You and your accompanying person(s) are cordially invited to attend our social programme during the 13th EFORT Congress in Berlin!

OPENING AND AWARD CEREMONY

Date	Wednesday, 23 May 2012
Time	18.45 – 20.00
Place	ICC Berlin
Programme	Official welcome by the President and Local Chairs, Award Ceremony



WELCOME RECEPTION

The Welcome Reception will take place right after the Opening and Award Ceremony. Don't miss this opportunity to network, meet seasoned professionals and newcomers, and reunite with friends and colleagues!

Date	Wednesday, 23 May 2012
Time	After official Opening and Award Ceremony
Place	ICC, Berlin
Programme	Reception (drinks & finger food)

Participants To these events we welcome registered participants, registered accompanying persons and industry representatives

BERLIN NIGHT

Right in the heart of Berlin you will find the very traditional Theater des Westens – a theatre building that is one of a kind. It is undoubtedly one of the most beautiful and well-known theatres in Germany. The elegant and glamorous foyer is the most famous room at this venue. This theatre is sure to remain in your memories for a long time.



Date	Thursday, 24 May 2012
Time	20.00 – 23.00
Place	Theater des Westens
Programme	Artistic performance followed by a buffet dinner
Dress code	Semi-formal
Price	EUR 86.00 + local VAT (excl. transport)
Admission	Tickets must be booked in advance

CHARITY RUN/WALK



5.0km **Run**

2.5km **Walk** 

Join us for this sunrise charity event!



Date	Friday, 25 May 2012
Time	06.00 – 07.00
Place	To be announced on the website
Fee	To be announced on the website – all race proceeds will be devoted to research through the EFORT FOUNDATION (www.efortfoundation.org)

Registration and fees



Congress dates

Wednesday, 23 May – Friday, 25 May 2012

REGISTRATION

Online registration at www.efort.org/berlin2012 is preferable. Participants and accompanying persons are requested to register in advance using the online portal on the congress website www.efort.org/berlin2012. All fees are indicated in EUR, incl. VAT. In order to avoid double charges, please submit your registration ONCE.

The late registration fee will apply for any forms received after 30 January 2012. Registrations received after 4 May 2012 will be processed as on site registrations.

CONFIRMATION

When appropriate payment has been received, a confirmation/invoice will be sent to participants. This confirmation should be presented at the registration desk, pre-registration counter on site.

Registration fees (incl. 19% VAT)	EARLY up to 30 January 2012	LATE 31 January 2012 to 3 May 2012	ON SITE after 4 May 2012
Participants	EUR 361	EUR 431	EUR 481
Residents in training*	EUR 190	EUR 271	EUR 341
Students*	EUR 130	EUR 150	EUR 160
Nurses and allied providers	EUR 130	EUR 150	EUR 160
Nurse sessions only	EUR 48	EUR 48	EUR 57
ExMEx sessions			
- Acetabular fractures 23 May	EUR 51	EUR 58	EUR 58
- Revision in cruciate ligament reconstruction 23 May	EUR 51	EUR 58	EUR 58
- Periprosthetic fractures around the hip and knee 24 May	EUR 51	EUR 58	EUR 58
- Osteoporosis and operative treatment of fragility fractures 25 May	EUR 51	EUR 58	EUR 58
The Comprehensive Orthopaedic Review Course (CRC) 25 May	EUR 115	EUR 143	EUR 143
Accompanying person	EUR 62	EUR 91	EUR 105
One-day registration - on site only			EUR 211

* I certify that I am entitled to the reduced registration fee. Proof of status must be attached to this registration form, otherwise the regular fee will be applied.

Payment and cancellations



Early registration deadline: 30 January 2012

Pre-registration deadline: 04 May 2012

REGISTRATION FEE FOR PARTICIPANTS INCLUDES

- Admission to scientific sessions and satellite symposia
- Abstract CD
- Congress bag with numerous Congress documents
- Opening / Award Ceremony and Welcome Reception
- Admission to the industry exhibition
- European CME credits
- Certificate of attendance
- Voucher for local transport (except for one-day registrations, allied care providers incl. nurses, student and exhibitors)

REGISTRATION FEE FOR PARTICIPANTS IN THE CRC INCLUDES

- Admission to the full-day CRC course on 25 May (approx. 08.00-17.00)
- Admission to the industry exhibition (day of CRC course only)
- Lunch package
- European CME credits
- Certificate of attendance

More details at: www.efort.org/berlin2012/CRC

Participants with a CRC ticket are not granted access to other scientific sessions running on the same day.

REGISTRATION FEE FOR ACCOMPANYING PERSONS INCLUDES

- Opening / Award Ceremony and Welcome Reception
- Admission to the industry exhibition
- Voucher for local transport

METHOD OF PAYMENT

Payment should be made in Euros, without charges for the recipient, as follows:

- **By credit card** (Eurocard/Mastercard, Visa). Your card number, expiry date, credit card verification number, date and signature must be given on the registration form.
- **By bank transfer.** Please contact EFORTregistration@mci-group.com for bank details. A banking fee of EUR 19 will be charged for every transfer.
- **On site** payments can also be made in cash, by credit card or travellers' cheque.

CANCELLATION POLICY

Registration / confirmation / cancellation

The deadline for pre-registration is 4 May 2012. Registration and services booked can only be confirmed after receipt of full pre-payment or valid credit card details. In case of cancellation of participation by 15 December 2011 the registration fee will be refunded, deducting a handling fee of 30% of the paid amount. Between 15 December 2011 and 15 March 2012 the registration fee will be refunded deducting a handling fee of 50% of the paid amount. After 15 March 2012 there will be no refund whatsoever. Cancellations must be communicated in writing. For name changes a EUR 39 handling fee will be charged in any case. Should you have any special requests for the processing of your invoice, kindly let us know when returning your registration form. We will charge EUR 39 for the rewriting of invoices. All refunds will be made within two months of the end of the Congress. Bank charges may be deducted. Registrations sent by fax or mail are subject to an additional EUR 19 administration charge. Rates for sub-contractors are based on the current tariffs and VAT rate. All prices and details that are beyond our control are subject to change.

EFORT CORE PCO

MCI Schweiz AG
MCI Zurich Office
Flughofstrasse 54, 8152 Zurich-Glattbrugg, Switzerland
E-mail: EFORTinfo@mci-group.com



General information



www.efort.org/berlin2012

Badges	All delegates and accompanying persons will receive a name badge on site. The name badge is your ticket for booked activities and sessions. Admission to the Congress will not be allowed without badge identification.
Bank services	Banks are open from 10.00 to 16.00, Monday to Friday. At Tegel airport you will find an International Currency Exchange open from 05.00 to 21.30 – seven days a week. ATM machines and services are generally provided outside of banks and accept all international credit cards, Maestro, Cirrus and Bancomat cards.
Certificate of attendance	All registered attendees, whether they register in advance or on site, will receive a certificate of attendance issued on site.
Climate	Berlin has a humid continental climate. Summers are warm with average high temperatures of 22–25 °C and lows of 12–14 °C. Winters are cold with average high temperatures of 4 °C and lows of -2 to 0°C. Spring and autumn are generally chilly to mild. The average temperature in May and June will be between 14 and 20°C with a 50% chance of rain.
Cloakroom and storage	A cloakroom and luggage deposit located at the main entrance will be available during the official Congress time schedule. The congress centre and the organisers are not responsible for any items lost or left behind.
Congress language	The official Congress language is English. Please note that no simultaneous translation will be provided.
Currency	The local currency is the Euro (EUR).
Disabled persons	The congress centre is easily accessible to disabled persons. Kindly address any request for special assistance to the Congress secretariat: MCI Schweiz AG, EFORTinfo@mci-group.com .
First aid	A first aid room is available at the congress centre. Please ask any staff member for help in case of need.
Food and refreshments	Lunch and refreshments are not included in the registration fee. You can buy lunch and refreshments in several catering areas within the congress centre.
Industry exhibition	The industry exhibition is open to pharmaceutical companies, manufacturers of medical and surgical equipment, software equipment and scientific publishers. The industry exhibition is located at the ICC and will be open from 23 May to 25 May 2012 according to the session time-table. Interested companies are advised to contact the PCO at EFORTexhibition@mci-group.com .
Insurance	The organisers are not responsible for individual medical, travel or personal insurance. Participants and accompanying persons should arrange their own cover.

General information



www.efort.org/berlin2012

Internet connections

Workstations with an internet connection will be available during the Congress opening hours. Participants are kindly requested to limit internet usage to five minutes to allow as many participants as possible to use this service.

Letter of invitation

Those persons needing an official invitation letter in order to attend the Congress may contact EFORTinfo@mci-group.com specifying the necessary details. This service is designed only to assist participants who need to obtain a visa or permission to attend the Congress. It should not be considered as an official invitation covering fees or other expenses.

Liability disclaimer

The organisers cannot be held liable for any hindrance or disruption of Congress proceedings arising from political, social or economic events or any other unforeseen incidents beyond their control. The organisers will accept no liability for any personal injuries sustained or for loss or damage to property belonging to Congress participants, either during or as a result of the Congress or during all tours and events. Registration of a participant entails acceptance of these conditions.

Lost and found

For lost and found items, please refer to the cloakroom on site.

Mobile phones

Mobile phones are strictly prohibited during all scientific sessions.

No-smoking policy

Smoking is strictly prohibited during all meetings and sessions and in exhibition halls at all times.

Passport & visa requirements

Every person entering Germany should be in possession of a valid passport and/or identity card. For further information on visa requirements, please contact the German embassy or consulate nearest to your home. <http://bundesrepublik.org/Deutsche+Botschaften+und+Auslandsvertretungen/>
Germany is one of the member countries of the Schengen Convention. Legal residents of one Schengen country do not require a visa for other Schengen countries. No responsibility is taken by the organisers for the correctness of this information.

Registration on site

The registration and information desks will be located in the main entrance hall of the ICC Berlin, Neue Kantstrasse/corner of Messedamm, 14057 Berlin, Germany

Social programme and tours desk

This desk is located in the registration area at the congress centre. Please refer to this desk for information about the Congress social programme and optional tours.

About the host city



Useful link: www.berlin.de/international/index.en.php

Berlin's culture is as multi-faceted as the city itself. It is varied, exciting and always original. Berlin is at the cutting edge of music, art and lifestyle trends. At the same time outstanding museums, orchestras and theatres continue to cultivate the city's great traditions. Drawn to the capital by its wealth of creativity, more and more artists from around the globe are transforming Berlin into one of Europe's most innovative metropolises.

History

Founded in the 13th century, Berlin has had an eventful history. Excavations from 2008 suggest that the city may be even older than was previously assumed: state archaeologists have discovered an oak beam that probably dates back to 1183. Almost no other city has experienced such frequent, radical change transforming its face. Although Berlin saw steady growth in its importance, dazzling epochs alternated with darker eras. Nevertheless, the formerly divided city has succeeded in becoming a vibrant metropolis in the heart of Europe. Nearly 20 years after the fall of the Berlin Wall, the city never ceases to change and develop.

Art

Berlin is the city of the muses, artists and museums! Berlin has over 170 museums packed with the world's art treasures and fascinating historical exhibitions spanning the centuries! But is also home to an amazing creative pool of art producers - more than 6,000 artists and cultural workers busily creating the dynamic young art for tomorrow's collections.

Entertainment

Berlin is home to the best in light entertainment - musicals, the Wintergarten and Chamäleon vaudevilles, the Friedrichstadtpalast, Europe's largest revue theatre with its legendary high-kicking chorus girls and breathtaking stage shows, plus entertainment galore at any number of exciting smaller venues. Many theatres also present stunning programmes.

CONGRESS VENUE

ICC Berlin

Neue Kantstrasse/corner of Messedamm, 14057 Berlin, Germany

Phone +49 (0)30 3038 3000

Fax +49 (0)30 3038 3030

www.icc-berlin.de



Hotel information



How to book hotel accommodation

www.efort.org/berlin2012/hotel

In order to make a hotel reservation, please:

- Access the congress website at www.efort.org/berlin2012/hotel to make your preliminary choice
- Access the registration platform and choose your hotel accommodation

Advance hotel bookings are handled by:

MCI Deutschland GmbH

E-mail: EFORHotels@mci-group.com

www.efort.org/berlin2012



Rates per room and night including breakfast and local VAT.

Category	Single occupancy min/max in EUR	Double occupancy min/max in EUR
5*	245 / 379	265 / 395
4*	132 / 320	152 / 350
3*	98 / 169	118 / 179
2*	99 / 135	129 / 155

HOTEL ACCOMMODATION

The hotels have limited capacities. It is recommended that you make your hotel booking as early as possible. If the first-choice hotel/category has already been sold out, MCI Deutschland GmbH reserves the right to arrange accommodation in another hotel/category. All changes and cancellations are to be made in writing and addressed exclusively to MCI Deutschland GmbH. In case of partial or total cancellation of the hotel reservation by 22 November 2011, a EUR 40 handling fee per person will be charged. Thereafter and up to 22 December 2011, the cancellation of one night's accommodation will be charged at the full rate. If two or more nights' accommodation is wholly or partially cancelled, 50% of the cancelled hotel nights will be charged. In cases of cancellation or no-show without prior notice after 22 February 2012, the full cost of the accommodation will be charged. In case of no-shows the right to the booked hotel room expires the following day at 9.00 local time.

A fee of EUR 30 per person will be charged for changes in hotel reservations. The hotel is liable to pay damages if the reserved room is not made available. To secure adequate overnight capacities, hotel rooms for the Congress have had to be contracted a long time in advance. Hotels occasionally publish online or last-minute promotion rates for a limited number of rooms which may vary from the prices contracted for the Congress.

HOTEL RESERVATION

The details of all Congress hotels will be available www.efort.org/berlin2012 as of July 2011.

The deadline for reservations is 23 March 2012. There are only limited numbers of hotel rooms available. Please book your desired hotel as early as possible.

For GROUP BOOKINGS please contact:

MCI Deutschland GmbH

Markgrafenstrasse 56

10117 Berlin, Germany

Phone +49 (0)30 20 45 90

Fax +49 (0)30 20 45 950

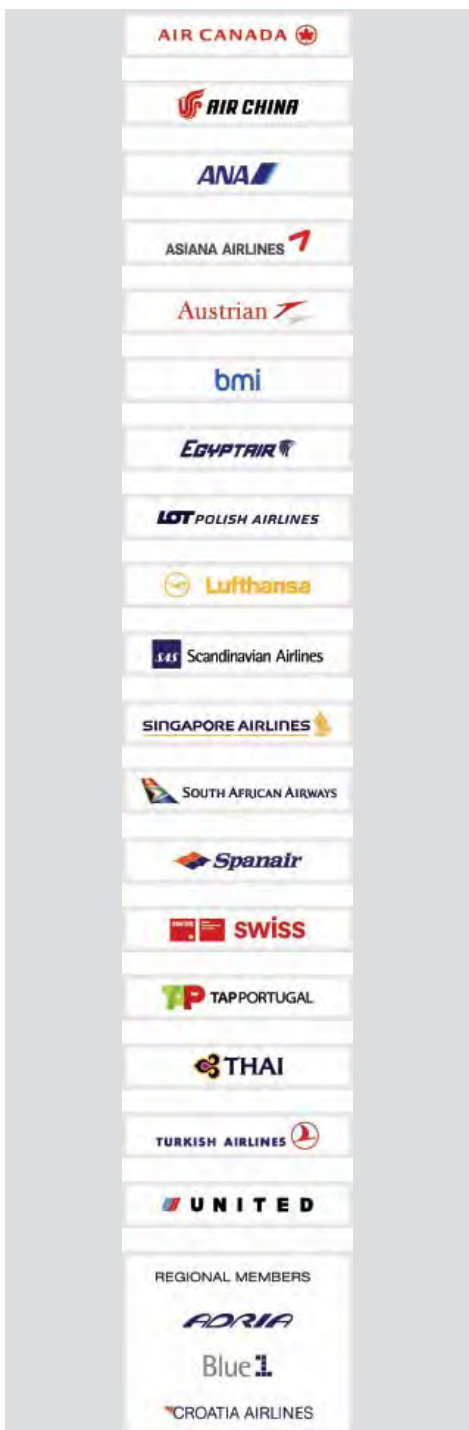
E-mail: EFORHotels@mci-group.com

CONFIRMATION OF HOTEL RESERVATION

When the appropriate payments have been processed, a confirmation/invoice will be sent to participants. This confirmation will include all details for the hotel reservation.



There are many ways how to get to Berlin



TRAVEL BY AIR

Thanks to very well developed national and international air connections, reaching Berlin is quick and convenient.

SAVE UP TO 20% ON TRAVEL WITH THE STAR ALLIANCE NETWORK

The Star Alliance™ member airlines are pleased to be appointed as the Official Airline Network for 13th EFORT Congress 2012.

To obtain the Star Alliance™ Conventions Plus discounts, please call the reservation office of a participating Star Alliance member airline and quote the following convention code: **LH03S12**.

Registered participants plus one accompanying person travelling to the event are automatically granted a discount of up to 20%, depending on the fare and class of travel booked.

The participating airlines for this event are: Air Canada, Air China, Asiana Airlines, Austrian Airlines, LOT Polish Airlines, Lufthansa, SWISS International Air Lines, Scandinavian Airlines, Spanair, TAP Portugal, United.

For booking office information, please visit:
www.staralliance.com/conventionsplus

Discounts are offered on published business and economy class fares, excluding website/internet fares, senior and youth fares, group fares and Round the World fares.

Please note: For travel from Japan and New Zealand, special fares or discounts are offered by the participating airlines on their own networks.

When making your travel plans, please present confirmation of your registration or proof of attendance.



FLY – AND OFFSET GREENHOUSE GASES

Dear attendees,
Sometimes it is difficult to do without flying, even though it is clear that every flight contributes to global warming. If you want to take responsibility for the emissions your flights cause, there are a number of different organisations engaged in environmental matters (e.g. www.myclimate.com). Using an emissions calculator, "myclimate" customers can figure out how much greenhouse gas emissions are caused by their individual flights. With your donation you enable "myclimate" or other organisations to run projects in developing countries where these emissions will be saved.

Hotline +49 (0) 1805 31 11 53**



TRAVEL BY TRAIN

Discounted rail fares with Deutsche Bahn to the EFORT Congress

Deutsche Bahn AG brings you quickly, comfortably and conveniently to the EFORT Congress in Berlin.

Enjoy pleasant and relaxed travelling with a special service. Travel by rail at a special rate in first or second class from a DB-station of your choice to Berlin and back.

The fare for a round trip* to Berlin is a fixed price from all stations within Germany:

■ 2nd class	EUR 99
■ 1st class	EUR 159

The exclusive offer is valid within Germany on all DB trains, including the ICE. The tickets are valid on 23 - 26 May 2012.

Book your ticket by calling the hotline +49 (0)1805 31 11 53** from Monday to Saturday. Please use the reference "EFORT".

* Changes and reimbursements before 1st day of validity EUR 15, not possible from 1st day of validity onwards.

** Telephone costs are 14 ct/min from the Deutsche Telekom network.

All prices and details are subject to changes beyond our control.









Transport in Berlin

TRANSPORT TO THE CONGRESS CENTRE

Public transport - In Berlin, the Verkehrsverbund Berlin-Brandenburg (VBB) fares apply. The Berlin public transport system is efficient and the combination of buses, trams, the U-Bahn (underground) and S-Bahn (commuter rail) reaches every part of the sprawling city and its surroundings. The U-Bahn and S-Bahn are the best ways of getting around, buses cover the parts of the city that cannot be reached by train, and East Berlin has a network of modernised tram lines of pre-war origins. Your advantage: With a VBB ticket, you can use all the means of transport offered the various transport companies in Berlin and Brandenburg.

Public transport to exhibition grounds / ICC Berlin

		to stop/station
	2	Kaiserdamm
	9, 75	Messe Süd
	41, 42, 46	Messe Nord / ICC
	5, 7, 9, 41, 42, 45, 46, 47, 75	Westkreuz
	M 49, X 34, X 49, 104, 139	Messedamm / ZOB / ICC



TRAVEL BY CAR

Environmental Zone

Please note that the Environmental Zone came into force in Berlin on 1 January 2008. Vehicles may only enter this area if they display a valid sticker showing that their emissions do not exceed a specified level of fine particulates. Signs have been erected on the roads clearly showing where the Environmental Zone begins. The exhibition grounds and ICC are located outside the Environmental Zone. Visitors arriving by car via the motorway system and entering the exhibition grounds directly via the interchange marked „Messegelände/Messedamm“ are outside the zone and do not therefore require a sticker.

More information:

www.berlin.de/sen/umwelt/luftqualitaet/de/luftreinhalteplan/umweltzone_aktuelles.shtml

Autobahns radiate from the German capital like a star, and most of these motorways can now carry six lanes of fast-moving traffic. Once you are on the A10 (Berliner Ring), look for the signs to „Messegelände“ at the „Nuthetal“, „Oranienburg“, „Schönefelder Kreuz“ and „Pankow“ junctions. These will lead you directly to the A100, A111 and A115 (Avus) motorway and the „Funkturn“ junction, where you turn off at the „Messegelände“ exit.

5.000 parking spaces are situated in the direct vicinity of the exhibition grounds/ICC.



Global leading competence in ceramic hip components.



BILOX[®]. Over 6 million implanted worldwide.



SAVE THE DATES

Forthcoming EFORT Congresses

14th EFORT Congress
Istanbul, 5-8 June 2013

15th EFORT Congress
London, 4-7 June 2014

16th EFORT Congress
Prague, 27-30 May 2015

EFORT Head Office
Technoparkstrasse 1
8005 Zurich, Switzerland

Phone +41 (44) 448 4400
Fax +41 (44) 448 4411

event@efort.org
www.efort.org