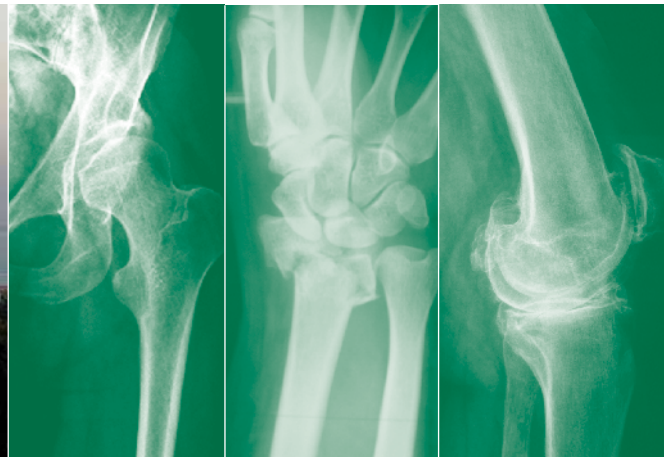


14th EFORT Congress 2013

Abstract submission deadline
15 September 2012

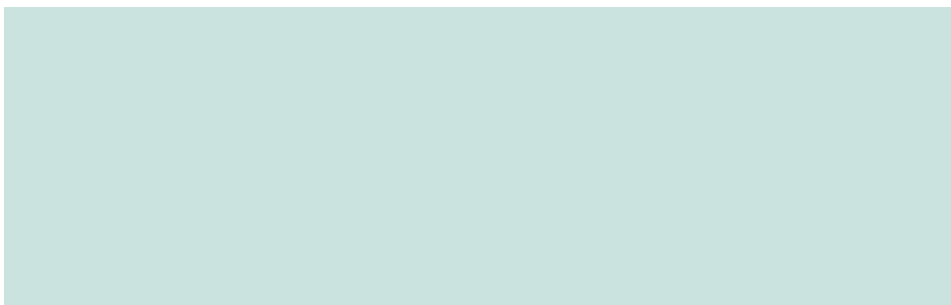
Early registration deadline
30 January 2013



First announcement & call for abstracts

Istanbul, Turkey
5 – 8 June 2013

Contents



GENERAL ORGANISATION

EFORT Head Office
Technoparkstrasse 1
8005 Zurich, Switzerland
Phone +41 (44) 448 44 00
Fax +41 (44) 448 44 11
E-mail event@efort.org
www.efort.org

CONGRESS ORGANISERS

MCI Schweiz AG
MCI-Zurich Office
Flughofstrasse 54
8152 Zurich-Glattbrugg, Switzerland
Phone +41 (44) 809 42 41
Fax +41 (44) 809 42 40
E-mail EFORTinfo@mci-group.com

INVITATION TO PARTICIPANTS

Welcome from EFORT 4
Societies 5

FORTHCOMING 14TH EFORT CONGRESS ISTANBUL

Call for abstracts 6
The Congress at a glance 7
Preliminary scientific programme 8
Preliminary social programme 9
Registration and fees 10
Payment and cancellations 11
General information 12 - 14

ABOUT ISTANBUL

About the host city 15
Hotel information 16
Travel information 17 - 18

Welcome from EFORT



Prof. Dr. Pierre Hoffmeyer



Prof. Dr. Hakki Sur

Dear Participants,

On behalf of the Executive Committee and the Local Organising Committee, we are delighted to invite you to participate in the 14th EFORT Congress in Istanbul in 2013.

Following the success of previous meetings, the scientific programme will focus on Symposia and Instructional Lectures given by distinguished speakers, as well as on Free Paper submissions from all over the world.

New formats such as Interactive Expert Exchanges, Complex Case Discussions and Debate Fora will be introduced. And since Free Paper sessions are the backbone of the Congress, an innovative **Best Free Paper Session** will allow participants to hear a selection of the best-rated free papers.

Highlights of the Congress include all-new sessions in evidence-based medicine, hip and knee tribology, complex elbow injuries, clavicle fractures, spinal trauma, metatarsalgia, growth alterations, and malformations, among many other current topics.

All in all, renowned faculty from across Europe will organise various Symposia, Instructional Lectures, Complex Case Discussions, Interactive Expert Exchanges, Debate Fora, and Evidence-Based Medicine Sessions.

In support of the UN Decade of Action for Road Safety (2011-2020), traffic accident-derived musculoskeletal injuries and their rehabilitation will remain a main topic of interest.

The scientific programme would, however, be incomplete without your participation, without Free Paper lectures, best rated paper posters and e-posters. We encourage all of you to submit abstracts of your work, so that we can put together an exceptional scientific programme. With hard work, the Local Organising Committee and the EFORT Scientific Committee are certain that this EFORT Congress will be a most valuable educational event.

We look forward to meeting you in the magnificent city of Istanbul for the 14th EFORT Congress in 2013.

A handwritten signature in black ink, appearing to read 'P. Hoffmeyer', with a long horizontal line extending to the right.

Prof. Dr. Pierre Hoffmeyer
EFORT President 2012/2013

A handwritten signature in black ink, appearing to read 'H. Sur', with a long horizontal line extending to the right.

Prof. Dr. Hakki Sur
Chair Local Organisation, Istanbul 2013 (TOTBID)

NATIONAL MEMBER SOCIETIES

Albania	AAOST	Albanian Association of Orthopaedic Surgery and Traumatology
Austria	ÖGO	Austrian Society of Orthopaedics and Orthopaedic Surgery
Belgium	BVOT	Belgian Association of Orthopaedics and Traumatology
Belgium	SORBCOT	Belgian Royal Society of Orthopaedic Surgery and Traumatology
Bosnia and Herzegovina	OTSABH	Orthopaedic and Traumatology Surgeons Association of Bosnia and Herzegovina
Bulgaria	BOTA	Bulgarian Orthopaedics and Trauma Association
Croatia	COTA/HUOT	Croatian Orthopaedic and Traumatology Association
Croatia	CrOS	Croatian Orthopaedic Society of the Croatian Medical Association
Cyprus	CAOST	Cyprus Association of Orthopaedic Surgery and Traumatology
Czech Republic	CSOT	Czech Society for Orthopaedics and Traumatology
Denmark	DOS	Danish Orthopaedic Society
Estonia	ETOS	Estonian Orthopaedic Society
Finland	SOY-FOA	Finnish Orthopaedic Association
Former Yugoslav Republic of Macedonia (FYROM)	MAOT	Macedonian Association of Orthopaedics and Traumatology
France	SOFcot	French Society of Orthopaedic Surgery and Traumatology
Germany	BVOU	Professional Association of Orthopaedic Surgeons
Germany	DGOOC	German Association of Orthopaedics and Orthopaedic Surgery
Greece	HAOST	Hellenic Association of Orthopaedic Surgery and Traumatology
Hungary	MOT/HOA	Hungarian Orthopaedic Association
Iceland	IBF	Icelandic Orthopaedic Society
Ireland	IOA	Irish Orthopaedic Association
Italy	SIOT	Italian Society of Orthopaedics and Traumatology
Kosovo	KSOTS	Kosovo Society of Orthopaedics and Trauma Surgeons
Latvia	LTOA	Latvian Association of Traumatology and Orthopaedics
Lithuania	LSOT/LOTD	Lithuanian Society of Orthopaedics and Traumatology
Luxembourg	SLOT	Luxembourgian Society of Orthopaedics and Traumatology
Malta	AOTSM	Association of Orthopaedic and Trauma Surgeons of Malta
Montenegro	AMOT	Association of Montenegrin Orthopaedics and Traumatology
Netherlands	NOV	Dutch Orthopaedic Association
Norway	NOF	Norwegian Orthopaedic Association
Poland	PTOITR	Polish Orthopaedic and Traumatologic Society
Portugal	SPOT	Portuguese Society of Orthopaedics and Traumatology
Romania	SOROT	Romanian Society of Orthopaedics and Traumatology
Russian Federation	AOTRF	Association of Orthopaedists and Traumatologists of the Russian Federation
Serbia	SOTA	Serbian Orthopaedic Trauma Association
Slovakia	SOTS	Slovak Orthopaedic and Traumatologic Society
Slovenia	SOA/ZOSZD	Slovenian Orthopaedic Association
Spain	SECOT	Spanish Orthopaedic and Traumatology Society
Sweden	SOF	Swedish Orthopaedic Association
Switzerland	SGOT-SSOT	Swiss Society of Orthopaedic Surgery and Traumatology
Turkey	TSOT/TOTBID	Turkish Society of Orthopaedics and Traumatology
Ukraine	UAOST	Ukrainian Association of Orthopaedic Surgeons and Traumatologists
United Kingdom	BOA	British Orthopaedic Association

SPECIALITY SOCIETIES AND AFFILIATED ORGANISATIONS COLLABORATING IN ISTANBUL

AO Spine	
AOTrauma	
ARTOF	Association for the Rational Treatment of Fractures
EBJIS	European Bone and Joint Infection Society
EFAS	European Foot and Ankle Society
EFOST	European Federation of National Associations of Orthopaedic Sports Traumatology
EHS	European Hip Society
EORS	European Orthopaedic Research Society
EPOS	European Paediatric Orthopaedic Society
ERASS	European Rheumatism and Arthritis Surgical Society
ESPA	European Society Plevis Acetabulum
ESSKA	European Society of Sports Traumatology, Knee Surgery and Arthroscopy
ESTES	European Society for Trauma and Emergency Surgery
EuroSpine	EuroSpine - the Spine Society of Europe
EWAS	European Wrist Arthroscopy Society
EWMA	European Wound Management Association
FESSH	Federation of European Societies for Surgery of the Hand
ISTF	International Surgical Thrombosis Forum

Call for abstracts



Direct access at: www.efort.org/istanbul2013/abstract

Deadline: 15 September 2012

ABSTRACT SUBMISSION

The abstract submission system is accessible through the EFORT portal at www.efort.org/istanbul2013 from 30 July 2012.

CATEGORIES OF ABSTRACT SUBMISSION

EFORT offers the following 18 categories:

A	General Orthopaedics
A1	Bone and joint tumours
A2	General Orthopaedics / complications / basic science / technology
A3	Infection
A4	Osteoporosis
A5	Pain control / rehabilitation and non-surgical management
A6	Sports / knee soft-tissue
A7	Tribology
B	Upper limb
B1	Hand and wrist
B2	Shoulder / elbow, arm / forearm
C	Spine
C1	Spine (incl. trauma)
D	Lower limb
D1	Foot / ankle / leg
D2	Hip
D3	Knee osseous
E	Trauma
E1	Trauma upper limb
E2	Trauma lower limb
E3	Polytrauma / pelvis
F	Paediatrics
F1	Paediatrics
G	Nurse
G1	Nurse

EFORT does not accept resubmissions. Only abstracts submitted electronically can be accepted.

ONLINE SUBMISSION PROCEDURE

After logging on to the EFORT portal, be sure to follow the onscreen instructions precisely as they lead you through the submission process. **There is no restriction on the number of abstracts you may submit, although a total of two oral presentations and five e-posters only will be accepted per registered participant.**

Some information is mandatory, however, and you will not be able to proceed further if you do not complete the fields. Please also note that you may modify your abstract(s) until the submission deadline date. Consider your submission category carefully. If there is a discrepancy between your topic and its category, EFORT reserves the right to change the category or reject your abstract.

For more details, please visit: www.efort.org/istanbul2013/abstract

INFORMATION ON ABSTRACT ACCEPTANCE

You will be notified by e-mail about the acceptance of your abstract(s) by 2 January 2013 at the latest. The presenting author of a selected abstract must undertake to attend the Congress and present the abstract in the session and at the time designated by the Scientific Committee. **EFORT therefore requires all authors to register by 30 January 2013 at the latest.** Only registrations to the full congress are accepted (no single day registrations).

TECHNICAL SUPPORT

Technical support will be provided for authors of abstracts, as detailed in the Frequently Asked Questions and Help document.

Please send all requests concerning electronic submissions for the 14th EFORT Congress by e-mail to: efortabs@mci-group.com.

ORAL PRESENTATIONS (Free Paper Sessions)

Computer projection only will be available for presentations in the meeting rooms. To ensure that sessions run smoothly, please refer to the Presentation Guidelines available online.

The best-rated Free Papers may be put forward for the EFORT Free Paper Award. From the presentations that are received, the three best will be selected for the award. The authors of the selected papers will be informed prior to the Congress, and certificates will be presented during the official opening ceremony.

E-POSTER PRESENTATIONS

The poster presentations will be in electronic format. A large display area will be dedicated to poster presentations.

Out of the best-rated e-poster abstracts submitted for the Congress, the ten best will be awarded the Jacques Duparc Award. Authors will be informed prior to the Congress, and certificates will be presented during the official opening ceremony.

The Congress at a glance

Important dates to remember



CONGRESS DEADLINES

Abstract submission	15 September 2012
Confirmation of abstract acceptance	02 January 2013
Early registration	30 January 2013
Preliminary programme available	01 March 2013
Pre-registration	19 May 2013

PRELIMINARY CONGRESS SCHEDULE

4 June Tuesday	5 June Wednesday	6 June Thursday	7 June Friday	8 June Saturday
	Morning sessions	Morning sessions	Morning sessions	Morning sessions
	Industry Lunch Symposia	Honorary Lecture Industry Lunch Symposia	Honorary Lecture Industry Lunch Symposia	
14.00 – 18.00 Registration	Afternoon sessions	Afternoon sessions	Afternoon sessions	
	18.30 – 20.00 Opening Ceremony & Welcome Reception ICC Istanbul	20.00 – 23.00 Istanbul Night		

EXHIBITION SCHEDULE

Wednesday, 5 June 2013	09.00 – 17.30
Thursday, 6 June 2013	08.30 – 17.30
Friday, 7 June 2013	08.30 – 17.30

Preliminary scientific programme

The scientific programme will consist of:

- A full-day Comprehensive Review Course (CRC)
- Complex Case Discussion
- Debate Forum
- e-poster/Video Presentations
- Evidence-Based Medicine Sessions
- Free Paper Sessions
- Honorary Lectures
- Industry Symposia
- Interactive Expert Exchange (IEE) Sessions
- Instructional Lectures
- Symposia

HIGHLIGHTS

- **Bone & joint tumours:** Lower limb reconstruction: state of the art
- **General orthopaedics / complications / basic science/technology:** Haemophilia: where are we? New trends based on experimental research
- **Infection:** Treatment of the infected fracture
- **Osteoporosis:** Evidence of tertiary prophylaxis in osteoporosis
- **Pain control / rehabilitation and non-surgical management:** Will training prevent THA and TKA?
- **Sports / knee soft-tissue:** Meniscal and knee ligament injuries today
- **Tribology:** A full day dedicated to topics on articulations in total hip arthroplasty
- **Hand & wrist:** Dupuytren's injections or surgery?
- **Shoulder / elbow, arm / forearm:** Clavicle fractures: to operate or not to operate?
- **Spine (incl. trauma):** Spinal trauma care: modern treatments
- **Foot / ankle / leg:** Metatarsalgia: current options
- **Hip:** Joint-preserving surgery
- **Knee osseous:** Early osteoarthritis: current management
- **Trauma upper limb:** Complex elbow injuries: what's new?
- **Trauma lower limb:** Solutions for proximal femoral fractures
- **Polytrauma / pelvis:** What to do after damage control?
- **Paediatrics:** Early care for growth alteration and malformation



THE COMPREHENSIVE ORTHOPAEDIC REVIEW COURSE (CRC) – 7 June 2013

Primary target attendees: Young orthopaedic surgeons, residents in training

Pre-registration is mandatory

Max. capacity: 150 participants

Fee: EUR 135.00 ¹⁾

This course aims to teach the knowledge that is needed for every specialist, and to broaden the participant's orthopaedic horizons. It features up-to-date presentations in five major areas:

- Lower extremity
- Upper extremity
- Spine
- Paediatrics
- Basic science

Attending this comprehensive full-day review course will provide the necessary knowledge base to prepare for the European Board examination (EBOT). Registration for this course is separate from the overall Congress registration.

More information at: www.efort.org/istanbul2013/CRC

INTERACTIVE EXPERT EXCHANGE (IEE)

Primary target attendees: Confirmed specialists and senior consultants

Pre-registration is mandatory

Max. capacity: 100 participants per session

Fee: EUR 55.00 ¹⁾

(please note that IEE sessions may be attended only if the participant is registered for the Congress)

Session structure

The IEE is 3.5 hours long and will be divided into two sessions, including a break of 30 minutes.

Each session may include:

- 1. Introduction** The moderator introduces the topics & the audience answers 10 open questions during an initial voting session (5 min, with electronic system). The speakers present evidence linked to the questions that have been addressed previously (5 x 5 min) as a theoretical symposium.
- 2. Discussion** Break-out in groups (5 x 20 participants), in which the speakers present the cases and ask „what would you do?“ to stimulate audience input.
- 3. Summary** Each speaker presents their conclusions as a prelude to a second voting session. The concluding remarks between the moderator and the speakers are based on the voting results.

The programme for each session is produced in cooperation with the appropriate European Speciality Society. There will be one or two IEE session(s) each day:

- How to manage bone defects in THA
- Joint preserving surgery of the hip
- DDH: Before walking age and residual deformities
- Pseudarthrosis – bone defects
- Infected fractures

¹⁾ Fee applies for pre-registration.

Preliminary social programme



You and your accompanying person(s) are cordially invited
to attend our social programme during the 14th EFORT Congress in Istanbul!



OPENING AND AWARD CEREMONY

Date	Wednesday, 5 June 2013
Time	18.30 – 20.00
Place	ICC Istanbul
Programme	Official welcome by the President and Local Chairs, Award Ceremony

WELCOME RECEPTION

The Welcome Reception will take place immediately after the Opening and Award Ceremony. Don't miss this opportunity to network, meet seasoned professionals and newcomers, and reunite with friends and colleagues!

Date	Wednesday, 5 June 2013
Time	After official Opening and Award Ceremony
Place	ICC Istanbul
Programme	Reception (drinks & finger food)

Participants Registered participants, registered accompanying persons and industry representatives are all welcome to attend these events

ISTANBUL NIGHT



Besides its unparalleled beauty and cultural richness, Istanbul's animated cultural life offers thousands of options. It is Istanbul's endless variety that fascinates its visitors. The museums, churches, palaces, grand mosques, bazaars and sights of natural beauty seem innumerable. Expect to be dazzled by the flavours of Turkish cuisine that offers a wide variety of tastes, you will never forget. The programme and venue of the Istanbul Night will be revealed in due time – until then you can look forward to a stunning location in this city that boasts an abundance of atmospheric venues and cultural variety.

Date	Thursday, 6 June 2013
Time	20.00 – 23.00
Place	Please consult www.efort.org/istanbul2013 for details
Programme	Please consult www.efort.org/istanbul2013 for details
Dress code	Semi-formal
Price	EUR 98.00 + VAT (excl. transport)
Admission	Tickets must be booked in advance

CHARITY RUN/WALK



5.0km **Run**

2.5km **Walk**



Join us for this sunrise charity event!



Date	Friday, 7 June 2013
Time	06.00 – 07.00
Place	To be announced on the website
Fee	To be announced on the website – all race proceeds will be devoted to research through the EFORT FOUNDATION (www.efortfoundation.org)

Registration and fees



Congress dates

Wednesday, 5 June – Saturday, 8 June 2013

REGISTRATION

Online registration at www.efort.org/istanbul2013 is preferred. Participants and accompanying persons are requested to register in advance using the online portal at www.efort.org/istanbul2013. All fees are indicated in EUR, incl. local VAT of currently 18 % (may be subject to change without prior notice).

The late registration fee will apply to any forms received after 30 January 2013. Registrations received after 20 May 2013 will be processed as on-site registrations.

CONFIRMATION

When appropriate payment has been received, a confirmation / invoice will be sent to participants. This confirmation should be presented at the registration desk on site.

Registration fees (incl. 18 % VAT)	EARLY up to 30 January 2013	LATE 31 January 2013 to 19 May 2013	ON SITE as of 20 May 2013
Participants	EUR 361	EUR 431	EUR 481
Residents in training*	EUR 190	EUR 271	EUR 341
Students*	EUR 130	EUR 150	EUR 160
Nurses and allied providers	EUR 130	EUR 150	EUR 160
Nurse Sessions only	EUR 48	EUR 48	EUR 57
Interactive Expert Exchange			
- How to manage bone defects in THA	EUR 55	EUR 59	EUR 61
- Joint preserving surgery of the hip	EUR 55	EUR 59	EUR 61
- DDH: Before walking age and residual deformities	EUR 55	EUR 59	EUR 61
- Pseudarthrosis – bone defects	EUR 55	EUR 59	EUR 61
- Infected fractures	EUR 55	EUR 59	EUR 61
The Comprehensive Orthopaedic Review Course (CRC) 7 June	EUR 135	EUR 145	EUR 195
Speaker coaching workshops	EUR 150	EUR 150	EUR 150
Accompanying person	EUR 62	EUR 91	EUR 105
One-day registration – on site only			EUR 211

* You must certify that you are entitled to the reduced registration fee. Proof of status must be attached to the registration form, otherwise the regular fee will apply.

Payment and cancellations



Early registration deadline: 30 January 2013

Pre-registration deadline: 19 May 2013

REGISTRATION FEE FOR PARTICIPANTS INCLUDES

- Admission to scientific sessions and industry symposia
- Abstract CD
- Congress bag with numerous Congress documents
- Opening / Award Ceremony and Welcome Reception
- Admission to the industry exhibition
- European CME credits
- Certificate of attendance
- Airport transfer roundtrip (except for one-day registrations)

REGISTRATION FEE FOR PARTICIPANTS IN THE CRC INCLUDES

- Admission to the full-day CRC course on 7 June (approx. 08.00 -17.00)
- Admission to the industry exhibition (day of CRC course only)
- Lunch package
- European CME credits
- Certificate of attendance

Participants with a CRC ticket are not granted access to other scientific sessions running on the same day.

More details at: www.efort.org/istanbul2013/CRC

REGISTRATION FEE FOR ACCOMPANYING PERSONS INCLUDES

- Opening / Award Ceremony and Welcome Reception
- Airport transfer roundtrip

METHOD OF PAYMENT

Payment should be made in Euros, without charges for the recipient, as follows:

- **By credit card:** (Eurocard/Mastercard, Visa). Your card number, expiry date, credit card verification number, date and signature must be given on the registration form.
- **By bank transfer:** For bank details please contact EFORTregistration@mci-group.com. A banking fee of EUR 19 will be charged for every transfer.
- **On site:** Payments can also be made in cash or by credit card.

CANCELLATION POLICY

Registration / confirmation / cancellation

The deadline for pre-registrations is 19 May 2013. Registration and services that have been booked can be confirmed only after receipt of full pre-payment or valid credit card details. If participation is cancelled by 13 December 2012 the registration fee will be refunded, less a handling fee of 30% of the amount paid. Between 13 December 2012 and 13 March 2013 the registration fee will be refunded less a handling fee of 50% of the amount paid.

After 13 March 2013 there will be no refund whatsoever. Cancellations must be communicated in writing. A EUR 39 handling fee will be charged for any changes of name (transfers of registration to another person). Should you have any special requests for the processing of your invoice, kindly let us know when returning your registration form. We will charge EUR 39 for the rewriting of invoices. All refunds will be made within two months of the end of the Congress. Bank charges may be deducted. Registrations sent by fax or mail are subject to an additional EUR 19 administration charge. Rates for sub-contractors are based on the current tariffs and VAT rate. All prices and details that are beyond our control are subject to change.

EFORT CORE PCO

MCI Schweiz AG
MCI Zurich Office

Flughofstrasse 54, 8152 Zurich-Glattbrugg, Switzerland

E-mail: EFORTinfo@mci-group.com



General information



www.efort.org/istanbul2013

Badges	All delegates & accompanying persons will receive a name badge on site. The name badge is your ticket for booked activities and sessions. Admission to the Congress will not be permitted without badge identification.
Bank services	Banking hours: Monday-Friday 09.00 to 12.30 and 13.30 to 17.30. All banks are closed at weekends and on public holidays. Banks at airports, ports and shopping malls are generally open longer. There are plenty of currency exchange offices and banks at which to change your money into Turkish lira (TRY). There are also some places which accept EUR or USD for shopping. We nonetheless recommend that you change your money into TRY. EUR 1 = TRY 2.35 (15 Feb 2012) USD 1 = TRY 1.77 (15 Feb 2012)
Certificate of attendance	All registered attendees, whether they register in advance or on site, will receive a certificate of attendance issued on site.
Climate	The average temperature in June is around 25°C (73.4°F).
Cloakroom and storage	A cloakroom and luggage deposit located at the main entrance will be available during the official Congress time schedule. The congress centre and the organisers are not responsible for any items lost or left behind.
Congress language	The language spoken in Turkey is Turkish. English is the official language of the meeting. There will be no simultaneous translation.
Currency & credit cards	The currency in Turkey is the Turkish Lira, TRY. A currency calculation can be found online at www.oanda.com . Commonly-accepted credit cards in hotels, restaurants and shops are Visa and MasterCard. Restaurants and shops generally display signs indicating what cards they accept.
Electricity	The normal electric current in Turkey is 220 V AC / 50 Hz, and two-pin plugs and sockets are used so travellers using other systems should bring in their own adapters or transformers for electrical appliances such as hairdryers and shavers.
First aid	A first aid room is available at the congress centre. Please ask any staff member for help in case of need.
Food and refreshments	Lunch and refreshments are not included in the registration fee. You can buy lunch and refreshments in several catering areas within the congress centre.
Industry exhibition	The industry exhibition is open to pharmaceutical companies, manufacturers of medical and surgical equipment, software equipment and scientific publishers. The industry exhibition is located at the Istanbul Congress Center and will be open from 5 June to 7 June 2013 according to the session timetable. Interested companies are advised to contact the PCO at EFORTexhibition@mci-group.com .
Insurance	The organisers are not responsible for individual medical, travel or personal insurance. Participants and accompanying persons should arrange their own cover.
Internet connections	Workstations with an internet connection will be available during the Congress opening hours. Participants are kindly requested to limit internet usage to five minutes to allow as many participants as possible to use this service.
Letter of invitation	Those persons needing an official invitation letter in order to attend the Congress may contact EFORTinfo@mci-group.com specifying the necessary details. This service is designed only to assist participants who need to obtain a visa or permission to attend the Congress. It should not be considered as an official invitation covering fees or other expenses.



www.efort.org/istanbul2013

Liability disclaimer

The organisers cannot be held liable for any hindrance or disruption of Congress proceedings arising from political, social or economic events or any other unforeseen incidents beyond their control. The organisers will accept no liability for any personal injuries sustained or for loss or damage to property belonging to Congress participants, either during or as a result of the Congress or during all tours and events. By registering, participants agree to be bound by these conditions.

Lost and found

For lost and found items, please refer to the cloakroom on site.

Mobile phones

Mobile phones are strictly prohibited during all scientific sessions.

No-smoking policy

Smoking is strictly prohibited during all meetings and sessions and in exhibition halls at all times.

Passport & visa requirements

Foreigners travelling to Turkey will need a passport and, for some countries, a visa to enter Turkey. Visas can be obtained either beforehand or on arrival at all entry points to Turkey. For detailed information about which countries need a visa and how you should apply, please find a preliminary list here below. This is intended as a rough guide only. Detailed and up-to-date information should be obtained from www.mfa.gov.tr EFORT will send invitation letters for visa purposes to registered participants only.

CITIZENS OF THESE COUNTRIES do not require a visa:

Albania	France	Lebanon	San Marino
Andorra	Georgia	Libya	Serbia
Argentina	Germany	Liechtenstein	Singapore
Azerbaijan	Greece	Lithuania	Slovenia
Bolivia	Guatemala	Luxembourg	Sweden
Bosnia-Herzegovina	Iceland	Macao S. A.	Switzerland
Brazil	Iran	Macedonia	Syria
Brunei	Israel	Malaysia	Tajikistan
Bulgaria	Italy	Mauritania	Trinidad and Tobago
Costa Rica	Japan	Monaco	Tunisia
Croatia	Jordan	Mongolia	Turkish Republic of Northern Cyprus
Czech Republic	Kazakhstan	Montenegro	Turkmenistan
Denmark	Kenya	Morocco	Uruguay
Ecuador	Republic of Korea	New Zealand	Uzbekistan
El Salvador	Kosovo	Nicaragua	Vatican
Estonia	Kyrgyzstan	Paraguay	Venezuela
Finland	Latvia	Romania	

General information



www.efort.org/istanbul2013

CITIZENS OF THE FOLOWING COUNTRIES

can obtain their visa at the arrival gates at the airport:

<u>Antigua-Barbuda</u>	<u>Cyprus</u>	<u>Kuwait</u>	<u>St Christopher-Nevis</u>
<u>Armenia</u>	<u>Dominica</u>	<u>Maldives</u>	<u>St Lucia</u>
<u>Australia</u>	<u>Dominican Republic</u>	<u>Malta</u>	<u>St Vinc. & the Grenadines</u>
<u>Austria</u>	<u>Grenada</u>	<u>Mauritius</u>	<u>Saudi Arabia</u>
<u>Bahamas</u>	<u>Haiti</u>	<u>Moldova</u>	<u>Slovakia</u>
<u>Bahrain</u>	<u>Honduras</u>	<u>Netherlands</u>	<u>South Africa</u>
<u>Bangladesh</u>	<u>Hong Kong</u>	<u>Norway</u>	<u>Spain</u>
<u>Barbados</u>	<u>Hungary</u>	<u>Poland</u>	<u>Ukraine</u>
<u>Belarus</u>	<u>Indonesia</u>	<u>Portugal</u>	<u>United Arab Emirates</u>
<u>Belgium</u>	<u>Ireland</u>	<u>Qatar</u>	<u>United Kingdom</u>
<u>Canada</u>	<u>Jamaica</u>	<u>Russia</u>	<u>United States of America</u>

Registration on site

The registration and information desks will be located in the main entrance hall.

Shopping hours

Shops are open between 10.00 and 18.00 hrs on weekdays and weekends. Shops in the city centre have extended opening hours. The main shopping streets in the centre of Istanbul are: Nişantaşı, Bağdat Street, Istiklal Street. There are also numerous shopping malls all around the city that operate between 10.00 – 22.00 hrs every day.

Time zone

Istanbul is in the Eastern European time zone (EET), which is two hours ahead of Greenwich Mean Time (three hours ahead during Summer Time).

About the host city



Useful link: www.visitistanbul.org

Located in the centre of the old world, this exotic city is famous for its historical monuments and scenic views. It is the only city in the world which spreads over two continents – Asia and Europe, which are separated by the narrow strait of the Bosphorus.

With a population of around 13 million, Istanbul is the third most crowded city in the world after Mumbai and Mexico. This historic city is situated on a peninsula flanked on three sides by the Sea of Marmara, the Bosphorus and the Golden Horn. The European side of Istanbul is called Thrace and the Asian side is called Anatolia. The city has 39 districts making up the metropolitan municipality.

Istanbul is adorned with the masterpieces of Turkish art, the great mosques of the Sultans that crown the hills. The city presents an exquisite, majestic and serene silhouette from all directions. The Golden Horn, which is a very secure natural harbour, has played a significant role in the development of the city.

Even if you spend only a short time in Istanbul, you can see much of its great heritage. Although renowned for its mystery and history, Istanbul is also a rapidly modernising country with a prime location – one foot in Europe and one in the Middle East. Thus Istanbul retains its fascinating differences and contradictions. Mosques coexist alongside churches, and remains from the Roman Empire still stand alongside ancient Hittite and Neolithic sites.

Its variety is one of Istanbul's greatest attractions. The ancient mosques, palaces, museums and bazaars reflect its diverse history. The thriving shopping area of Taksim buzzes with life and entertainment. And the quiet beauty of the Istanbul Strait, Princes' Islands and parks bring a touch of peace to the otherwise chaotic metropolis.

We look forward to welcoming you to Istanbul for the 14th EFORT Congress.



- | | | | | | |
|----|-------------------------|----|----------------------|----|-----------------------|
| 1 | Alkoçlar Keban | 12 | Germir Palas | 23 | Lion Hotel |
| 2 | Cartoon | 13 | Gezi Bosphorus | 24 | Marble |
| 3 | Central Palace | 14 | Golden Age 1 | 25 | Mega Residence |
| 4 | Ceylan Intercontinental | 15 | Golden Park | 26 | Park City |
| 5 | City Center Hotel | 16 | Grand Hyatt Istanbul | 27 | Park Hyatt |
| 6 | Conrad Istanbul | 17 | Grand Oztanik | 28 | Ramada Plaza Istanbul |
| 7 | Crystal | 18 | Grand Star | 29 | Riva Hotel |
| 8 | Divan | 19 | Hilton Istanbul | 30 | Ritz - Carlton |
| 9 | Eresin Taksim | 20 | Holiday Inn Şişli | 31 | Rixos Elysium Suites |
| 10 | Eterno | 21 | Innpera | 32 | Sofa Hotel |
| 11 | Feronya | 22 | Kervansaray Taksim | 33 | Swissotel Bosphorus |
| | | | | 34 | Taksim Gönen |

Hotel information



How to book hotel accommodation

www.efort.org/istanbul2013/hotel

In order to make a hotel reservation, please:

- Access the congress website at www.efort.org/istanbul2013/hotel to make your preliminary choice
- Access the registration platform and choose your hotel accommodation

Advance hotel bookings are handled by:

OFFICAL LOCAL DMC

Topkon Congress Services

Zühtüpaşa Mah. Rifatbey Sk. No:24

34724 Kalamış-Kadıköy Istanbul Turkey

Phone: +90 216 330 90 20 / pbx

Fax: +90 216 330 90 08

E-mail: efort2013@topkon.com

www.topkon.com

www.efort.org/istanbul2013

Rates per room and night including breakfast and local VAT.

Category	Single occupancy min/max in EUR	Double occupancy min/max in EUR
5* / Deluxe	260 / 430	290 / 430
4*	140 / 325	160 / 375
3*	80 / 220	115 / 245
2*	85 / 200	105 / 225

HOTEL ACCOMMODATION

The hotels have limited capacities. It is recommended that you make your hotel booking as early as possible. If the first-choice hotel/category has already been sold out, Topkon Congress Services reserves the right to arrange accommodation in another hotel/category. All changes and cancellations are to be made in writing and addressed exclusively to Topkon Congress Services. In case of partial or total cancellation of the hotel reservation by 24 October 2012, a EUR 40 handling fee per person will be charged. Thereafter and up to 24 October 2012, the cancellation of one night's accommodation will be charged at the full rate. If two or more nights' accommodation is wholly or partially cancelled, 50% of the cancelled hotel nights will be charged. In cases of cancellation or no-show without prior notice after 8 February 2013, the full cost of the accommodation will be charged. In case of no-shows the right to the booked hotel room expires the following day at 9.00 local time.

A fee of EUR 30 per person will be charged for changes in hotel reservations. The hotel is liable to pay damages if the reserved room is not made available. To secure adequate overnight capacities, hotel rooms for the Congress have had to be contracted a long time in advance. Hotels occasionally publish online or last-minute promotion rates for a limited number of rooms which may vary from the prices contracted for the Congress.

HOTEL RESERVATION

The details of all Congress hotels will be available www.efort.org/istanbul2013 as of August 2012. The deadline for reservations is 4 March 2013. There are only limited numbers of hotel rooms available. Please book your desired hotel as early as possible.

For **GROUP BOOKINGS** please contact:

MCI Deutschland GmbH

Markgrafenstrasse 56

10117 Berlin, Germany

Phone: +49 (0)30 20 45 90

Fax: +49 (0)30 20 45 950

E-mail: EFORHotels@mci-group.com



CONFIRMATION OF HOTEL RESERVATION

When the appropriate payments have been processed, a confirmation/invoice will be sent to participants. This confirmation will include all details for the hotel reservation.

Public Transport



ISTANBUL

Istanbul has a good public transportation network of buses, trams and underground trains. The congress venue is located in the heart of the city's business and cultural centre, allowing delegates easy access to municipal, domestic and international transportation networks.

Venue

Istanbul Congress Center – ICC

Taskisla Caddesi Harbiye / Sisli

Istanbul - Turkey

ICEC: www.icec.org

ICC: www.iccistanbul.com



A STAR ALLIANCE MEMBER 

COLLABORATION TURKISH AIRLINES

Turkish Airlines is the Official Airline of EFORT 2013 and offers a special discounted rate for the participants:

Up to 20% on Business Class

Up to 15% on Economy Class

Please show the event registration letter to the Sales Office of Turkish Airlines in your country if you plan to attend EFORT 2013 via Turkish Airlines. For a list of Turkish Airlines offices please follow the link: http://www.turkishairlines.com/en-INT/contact_us/offices.aspx

TAXI

In Istanbul taxis are yellow and are very easy to obtain either by stopping those on streets or by requesting one through the hotel/congress centre concierges. The meter in the car applies and charges are in TRY, please note credit cards are not yet valid in all taxis.

PUBLIC TRANSPORT

Public transport in Istanbul is efficient, convenient and safe, with its broad choice of options, but it can be very difficult to navigate if you do not know the language. We therefore suggest you use taxis, as they are very economically priced compared with most European cities.

TRAVEL TO ISTANBUL CONGRESS CENTER

Istanbul Lutfi Kırdar Convention & Exhibition Centre is located near the city centre on Taksim Square in the Harbiye area, and benefits from excellent transport connections.

- 23 km / 14.3 miles from Atatürk International Airport (30 minutes by taxi)
- 5 km / 3 miles from the main Sirkeci railway station, which is the terminal for the Orient Express
- 100 m from Harbiye bus stop on the Taksim-Sisli line
- 500 m from Taksim metro station, which is linked to the city's new underground system



Transport in Istanbul

HOW TO GET THERE

Istanbul has two airports: One on the European side (Atatürk Airport) and one on the Asian side (Sabiha Gökçen Airport). Both can be used but distance-wise (airport to congress centre), we would recommend Atatürk Airport.

ISTANBUL ATATÜRK AIRPORT

Istanbul Atatürk Airport is located 24 km southeast of Istanbul. You can use airport buses (Havaş), regular buses, taxis or the underground metro system to get into the city.

Airport buses: There are buses every hour to and from Taksim for TRY 10 (EUR 4.50 as at 15 Feb 2012).

Bus: There is direct 96 T bus connection from Istanbul Atatürk Airport to Istanbul city centre. The journey from the airport to the central station takes about 40 minutes. The bus leaves Istanbul Atatürk Airport every 50 minutes.

Taxi: The journey will cost approximately TRY 35 to TRY 45 depending on the route the driver takes, and will last about 45 minutes. Please make sure that you agree the price with the taxi driver before you start the journey.

Underground/metro: There is an underground station at the airport. The trip to the city centre involves changing twice and costs approx. TRY 5.

SABIHA GÖKÇEN INTERNATIONAL AIRPORT

Sabiha Gökçen International Airport is located on the Asian coast of Istanbul, 50 km southeast of the city centre.

Airport buses: There are buses every 30 minutes to and from Taksim (central Istanbul) for TRY 13.

Bus: Buses (IETT) depart from Sabiha Gökçen Airport (SAW) to central Istanbul.

Taxi: Taxis are available outside the terminal. Fees are at approximately TRY 65 – TRY 80 to the centre of Istanbul.



One Clot stops the Flow of Life

Protect it with Xarelto®

Prevent VTE after total knee or total hip replacement with Xarelto

56%

Reduction in the incidence of symptomatic VTE and death versus enoxaparin at 2 weeks¹

0,2%

Similar rate of major bleeding to enoxaparin at 2 weeks¹

VTE=venous thromboembolism

For further information, please visit
ThrombosisAdviser.com and Xarelto.com



Xarelto[®]
rivaroxaban

Xarelto® 10 mg film-coated tablets.
(Refer to full SmPC before prescribing.)

Composition: Active ingredient: 10 mg rivaroxaban. **Indication:** Prevention of venous thromboembolism (VTE) in adult patients undergoing elective hip or knee replacement surgery. **Contraindications:** Hypersensitivity to the active substance or to any of the excipients; clinically significant active bleeding; hepatic disease associated with coagulopathy and clinically relevant bleeding risk; pregnancy and lactation. **Warnings and Precautions:** *not recommended:* in patients concomitantly treated systemically with strong concurrent CYP3A4- and P-gp-inhibitors, i.e. azole-antimycotics or HIV protease inhibitors; in patients with severe renal impairment (creatinine clearance <15 ml/min), and due to lack of data in patients below 18 years of age or undergoing hip fracture surgery. *Careful monitoring for signs of bleeding required in:* patients with severe renal impairment (creatinine clearance 15 - 29 ml/min) or with moderate renal impairment (creatinine clearance 30 - 49 ml/min) concomitantly receiving other medicinal products which increase rivaroxaban plasma concentrations; cirrhotic patients with moderate hepatic impairment (Child Pugh B) not associated with coagulopathy; patients treated concomitantly with medicinal products affecting haemostasis; patients with congenital or acquired bleeding disorders, uncontrolled severe arterial hypertension, active ulcerative gastrointestinal disease, recent gastrointestinal ulcerations, vascular retinopathy, recent intracranial or intracerebral haemorrhage, intraspinal or intracerebral vascular abnormalities, recent brain, spinal or ophthalmological surgery; in patients at risk of ulcerative gastrointestinal disease an appropriate prophylactic treatment may be considered. *Use with caution:* in patients treated concomitantly with strong CYP3A4 inducers or with fluconazole; when neuraxial anaesthesia or spinal/epidural puncture is employed. Xarelto contains lactose. **Undesirable effects:** *Common:* post-procedural haemorrhage, nausea, fever, peripheral oedema, increased GGT, increase in transaminases. *Uncommon:* anaemia, thrombocytopenia, dizziness, headache, tachycardia, haematoma, gastrointestinal tract haemorrhage, urogenital tract haemorrhage, hypotension, nose bleed, constipation, diarrhoea, abdominal and gastrointestinal pain, dyspepsia, dry mouth, vomiting, pruritus, rash, contusion, pain in extremity, renal impairment, localised oedema, decreased general strength and energy, increase in: lipase, amylase, blood bilirubin, LDH, alkaline phosphatase; wound secretion. *Rare:* dermatitis allergic, syncope, hepatic function abnormal, urticaria, feeling unwell, bilirubin conjugated increased. *Frequency not known:* hypersensitivity, bleeding into a critical organ, adrenal haemorrhage, conjunctival haemorrhage, haemoptysis, pseudoaneurysm formation following percutaneous intervention, jaundice, compartment syndrome, renal failure/acute renal failure secondary to a bleeding. **Classification for supply:** Medicinal product subject to medical prescription. **Marketing Authorisation Holder:** Bayer Pharma AG, D-13342 Berlin, Germany **Further information available from:** Xarelto.MedInfo@bayer.com **Version:** EU/4

Reference: 1. Eriksson BI, Kakkar AK, Turpie AGG et al. Oral rivaroxaban for the prevention of symptomatic venous thromboembolism after elective hip and knee replacement. *J Bone Joint Surg [Br]* 2009;91-B:636-44.

© Bayer Pharma AG March 2012



SAVE THE DATES

Forthcoming EFORT Congresses

15th EFORT Congress
London, 4-7 June 2014

16th EFORT Congress
Prague, 27-30 May 2015

EFORT Head Office
Technoparkstrasse 1
8005 Zurich, Switzerland

Phone +41 (44) 448 4400
Fax +41 (44) 448 4411

event@efort.org
www.efort.org