



The Opportunities for Sponsors

Please find following 7 options of varying investment levels and locations around the Palexpo venue – the site of the 17th Annual EFORT Congress – a combined programme in partnership with swiss orthopaedics.

Deadline and process:

- All copy should be provided in print ready PDF format by no later than 20th May 2016
- The delivery address and contact information will be confirmed alongside acknowledgement of an order confirmation. The finished posters must also be delivered to an address in Switzerland by the published print deadline of no later than 20th May

Note: The delivery date for the Mega poster, however, is 01 May 2016

Investment costs:

All costs are before VAT

Please note that with the exception of the MEGA POSTER, all the following opportunities are subject to the following understanding: **The costs quoted include the cost of installation and dismantling**

Production/printing costs are **not** included and are at the clients own expense

The cost for the MEGA poster does, however, additionally include production and printing

Opportunities

1) Pillars by Main entrance/drop off area



- Located immediately by the main entrance.
- Seen by all delegates and faculty arriving by bus or taxi
- There are a total of 16 pillars – each pillar with four-sided panels
- Paper dimension file required for each panel is 116.5cm long and 170 cm deep/high

Investment: 2,500 CHF plus vat per pillar

2) Main entrance “drop off” “Billboards”



- Quantity available: Four
- Four highly visible DOUBLE SIDED billboards – each double sided billboard available separately
- Seen by delegates on foot outside the entrance and by delegates arriving by bus and/or taxi at the main entrance
- Each 5.8 m wide and 3.8 m high (a volume of 22 sqm)

Investment: 9,000 CHF plus vat EACH - and this cost covers the same advert on BOTH sides or 17,500 CHF for both billboards (4 sides)

3) Facade of Hall 5 Mega Poster (no photo)

- Quantity available: One
- 18.7 meters wide and 8.7 meters in height (a volume of 162.7 sqm)
- Visible from main road by airport and Palexpo and by all delegates walking to the venue from the airport

Investment: 25,000 CHF plus vat. **This cost covers production, installation and dismantling**

4) External Hall Poster



- One poster between halls 1-6.
7.1 meters wide and 4.8 meters in height (a volume of 34.08 sqm)

Investment: 12,000 CHF plus vat

5) F12 Roadside panels



Located alongside the main bus and taxi access and exit points to Palexpo between the security gate entrance and the main Palexpo drop off point and entrance for those delegates and faculty arriving by bus or taxi

- 48 one-sided panels in total
- Paper dimension file required for each is 268.5cm long and 128 cm deep

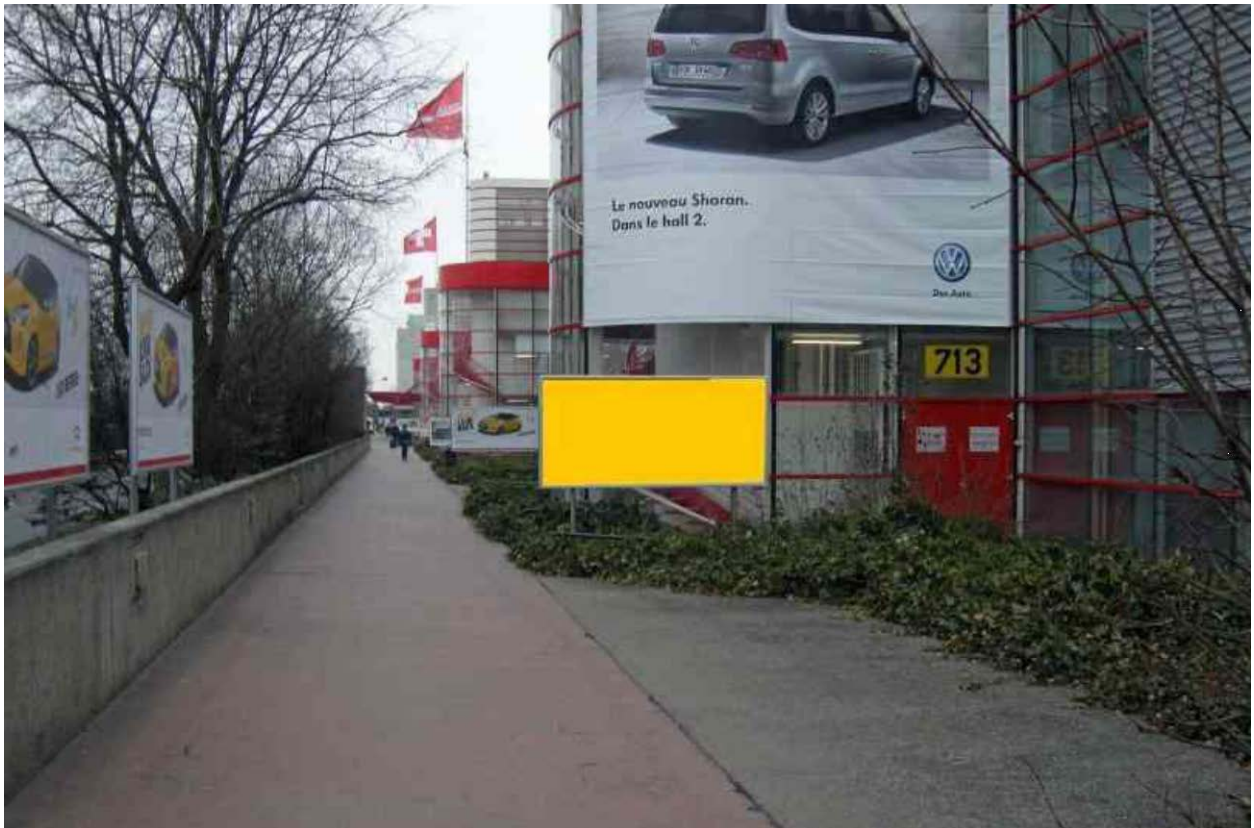
Investment: 800 CHF plus vat each (or 3,000 CHF for four) (or 5,500 for eight)

6) P12 Parking “Billboard”

- Next to security gate entrance by parking lot P12
- Visible to all those arriving at /exiting the parking P12
- 8.4 meters wide and 5.8 meters high (a volume of 48.7 sqm)
- Multi purpose: Advertising, services, events etc

Investment: 9,000 CHF plus vat each

7) Hall 7 F12/airport approach panels



- 16 one -sided panels in total
- Paper dimensions file required of each is 268.5 cm long and 128 cm deep
- Plain advertising and/or communication of an event (eg: satellite symposium)

EFORT Geneva
2016
**OUTDOOR
VISIBILITY
OPTIONS**

www.efort.org



- Location visible to all delegates walking toward Palexpo/Starling Hotel by foot from Geneva airport (visible to the general public)
- Multi purpose: Advertising, services, events etc

Investment: 8,

800 CHF plus vat each (Final inclusive cost of all technical costs, creative costs, assembly, testing and installation) (or 3,000 CHF for four) (or 5,500 CHF for eight)