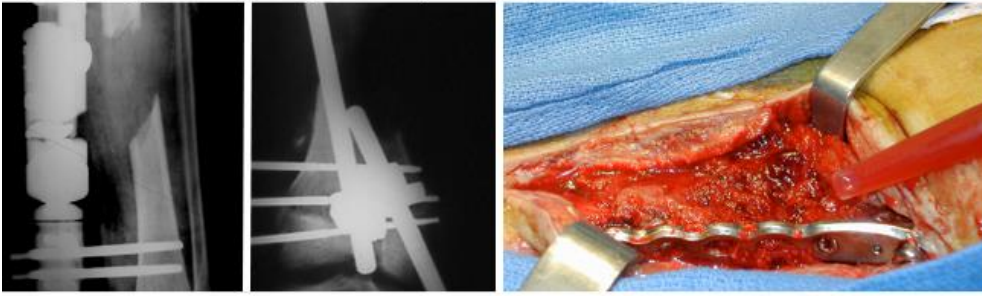


## EFORT Webinar

Monday 29 January 2024 | 19:00–20:00 CET



[www.efort.org/webinars](http://www.efort.org/webinars)

#EOTEP

## LIMITS OF THE MASQUELET TECHNIQUE IN SEGMENTAL BONE DEFECTS

**Chair:** *Thierry Begue, France*

The Webinar will address the following topics:

- |             |  |
|-------------|--|
| 19:00-19:05 | <b>Introduction</b><br><i>Thierry Begue, France</i>                                |
| 19:05-19:15 | <b>What can I do with the Masquelet Technique</b><br><i>Thierry Begue, France</i>  |
| 19:15-19:25 | <b>I Prefer the Free Fibula</b><br><i>Vincenzo Salini, Italy</i>                   |
| 19:25-19:35 | <b>Bone Transport Technique is the Best Option</b><br><i>Michael Brix, Denmark</i> |
| 19:35-19:55 | <b>Questions and Answers   All</b>   |
| 19:55-20:00 | <b>How to Choose?</b><br><i>Vincenzo Salini, Italy</i>                             |

### Learning Objectives:

This EFORT Educational Webinar will focus on management of “critical size” bone defects. The objectives of this Webinar are:

- Identifying what is a “critical size” bone defects
- Assessment of bone defect area for evaluation of bone and soft tissue
- Healing process and pitfalls with the different techniques of bone reconstruction

*This Webinar is organised by EFORT independent of any commercial educational support.*



**SIGN UP NOW @** <https://efort.webinargeek.com/20240129>